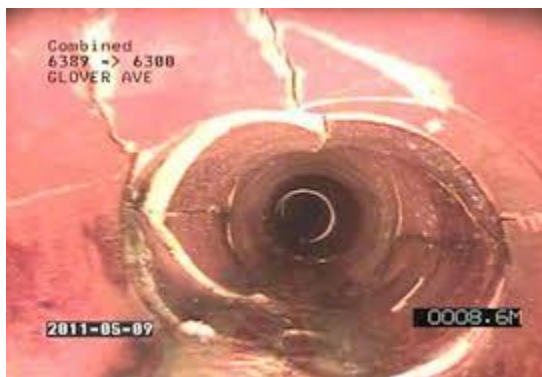


## Sewer Scope Inspections



The homeowner is responsible for the sewer line from the house to municipal main. This main can be located across the street or even down the street; the homeowner would be responsible for all restoration should the line fail. Also in some older areas the line does double duty with line also accepting the discharge from the storm water system. Recently it has become fairly common to run a camera from inside of the house to the main.

Frequently a recording is provided. Services and qualifications can vary greatly. A sewer inspection is not included in the base report, but it can be coordinated. It is common to perform the sewer inspection at the same time as the building inspection. Moisture issues in the basement are frequently the result of issues with the sewer line and sewer inspection is a great diagnostic tool to determine the cause of the water entry.



### Resources:

JPD Sewer Inspections LLC  
Josh Dutton  
(248)884-6592

Waterworks Plumbing  
(248)542-8022